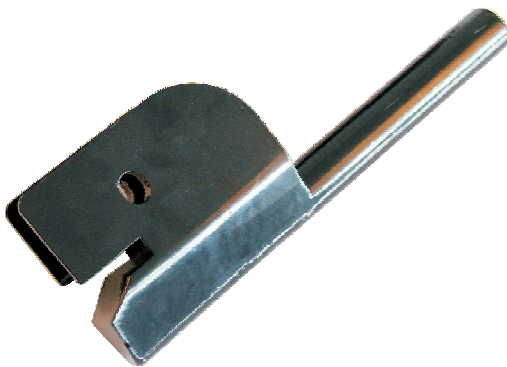


Farm Jack

Specification:

Item No	W.L.L	Size	Min. H	Max. H	N.W.	G.W.	Material	Color
FJ20ST	3000kg	20"	153mm	680mm	12kg	13kg	Steel	Customized
FJ33ST	3000kg	33"	153mm	700mm	13kg	14kg	Steel	Customized
FJ48ST	3000kg	48"	154mm	1070mm	14kg	15kg	Steel	Customized
FJ60ST	3000kg	60"	155mm	1350mm	15kg	16kg	Steel	Customized



Farm Jack Extender

Specification:

Fits all 20"/33"/48"/60" farm jack

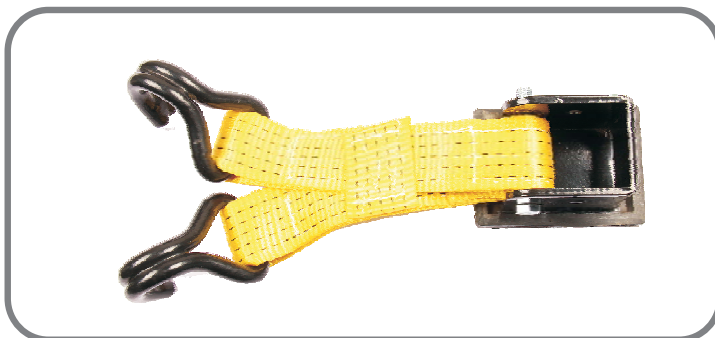
Item No: FJE501

Size: 300x110x56mm

Weight: 3.2kg

Material: Steel

Color: Black



Farm Jack Base

Specification:

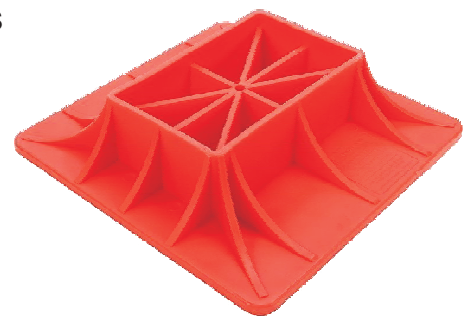
For all 20"/33"/48"/60" farm jack

Item No: JB301

Size: 30cmx30cmx7cm

Material: ABS

Color: Red



Farm Jack Mate

Specification:

Work with farm jack for lifting car

Item No: JM301

Length: 40cm

Weight: 2.1kg

Material: Steel and Polyester

Color: Yellow



Item No: TH5AL

Specification:

W.L.L: 5000KG

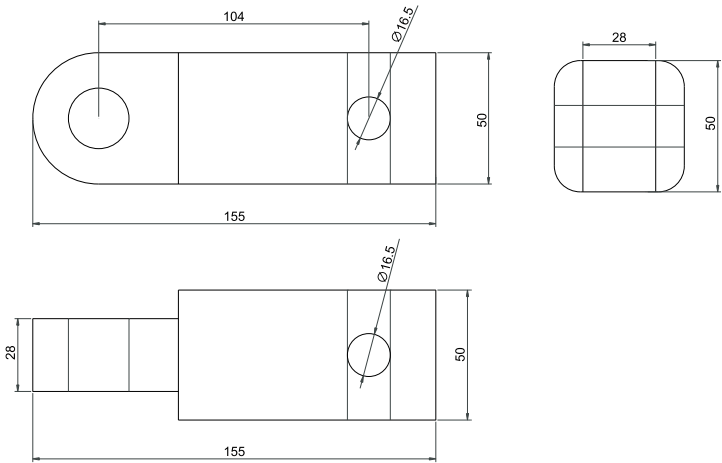
Size: 155x50x50mm

Weight: 0.8kg

Material: Aluminum

Color: Customized

Finish: powder-coated/oxidation



Item No: TH5AL-L

Specification:

W.L.L: 5000KG

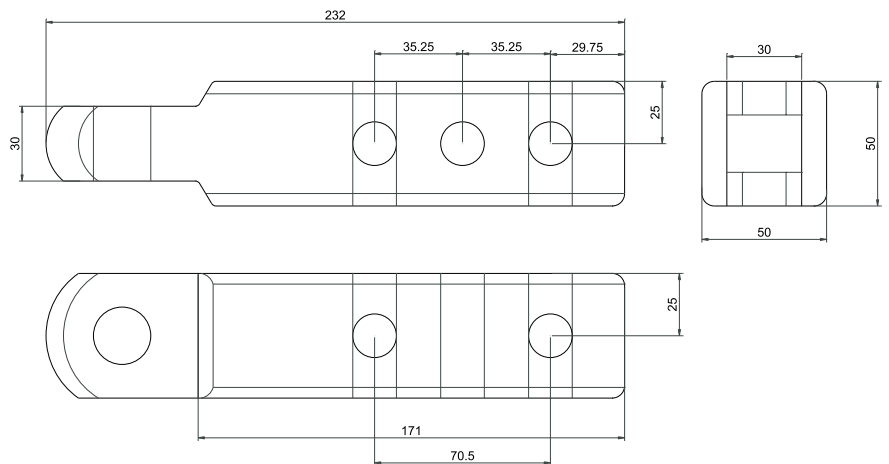
Size: 232x50x50mm

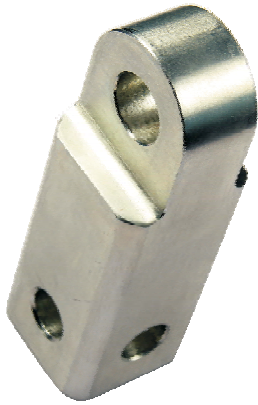
Weight: 1.1kg

Material: Aluminum

Color: Customized

Finish: powder-coated/oxidation





Item No: TH5ST

Specification:

W.L.L: 5000KG

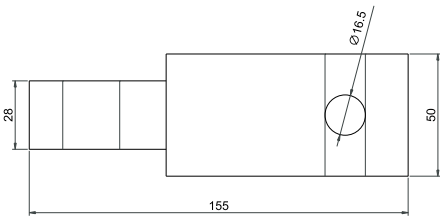
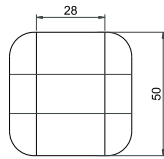
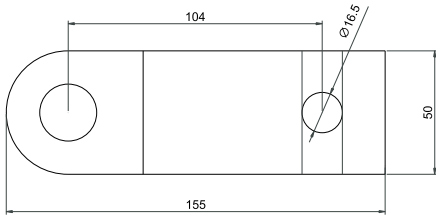
Size: 155x50x50mm

Weight: 2.2kg

Material: Steel

Color: Customized

Finish: powder-coated/galvanized



Pin with R Clip

Specification:

Item No: PC58ST

Size: 5/8"x4"

Weight: 205g

Material: Steel

Color: Silvery

Hitch Receiver with 3/4" Shackle

Specification:

Fits all 2" hitch bars with rated

Item No: TH5ST-DS

Length: 24cm

Weight: 3.1kg

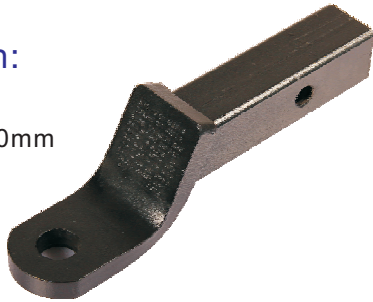
Material: Steel

Color: Customized

Tow Ball Mounts

Specification:

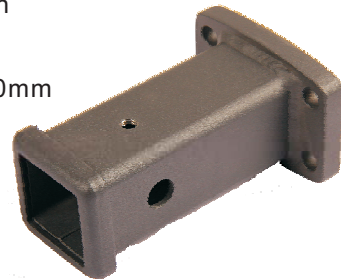
Item No: TH2ST
 Size: 310x60x100mm
 Weight: 2.7kg
 Material: Steel
 Color: Black



Hitch Receiver Tube

Specification:

For 2" towing hitch
 Item No: RT2ST
 Size: 167x112x80mm
 Weight: 1.9kg
 Material: Steel
 Color: Black



Winch Shackle

Specification:

Skull Shape Winch Shackle
 Item No: WS5AL100
 W.L.L: 5000KG
 Size: 103x92x118mm
 Weight: 1.35kg
 Material: Aluminium 6061-T6/7075-T6
 Color: Customized



Specification:

Double Heads Eagle Shape Winch Shackle
 Item No: WS5AL200
 W.L.L: 5000KG
 Size: 95x95x130mm
 Weight: 1.20kg
 Material: Aluminium 6061-T6/7075-T6
 Color: Customized



Item No: SH58ST

Specification:

W.L.L: 3.25T
 Size: 5/8"
 Weight: 570g
 Material: Steel
 Color: Customized
 Finish: powder-coated/galvanized/electrophoretic



Shackle Isolator & Shackle Washer

Specification:

For 3/4" shackle
 Item No: SI34DR SW34DR
 Material: Rubber
 Color: Black



Item No: SH34ST

Specification:

W.L.L: 4.75T
 Size: 3/4"
 Weight: 1000g
 Material: Steel
 Color: Customized
 Finish: powder-coated/galvanized/electrophoretic



Item No: SH118ST

Specification:

W.L.L: 9.5T
 Size: 1-1/8"
 Weight: 3000kg
 Material: Steel
 Color: Customized
 Finish: powder-coated/galvanized/electrophoretic



Soft Shackle

Specification:

Light weight, easier to use and store
 Item No: SH9PE
 Length: 50cm
 Weight: 145g
 Material: PE
 Color: Red



Vehicle Recovery Board

Specification:

Item No: RB120PL100, RB120PL200

W.L.L: 5T

Length: 120cm

Weight: 4.65kg/pair, 8kg/pair

Material: PVC

Color: red, black

Jerry Can Holder Bracket

Specification:

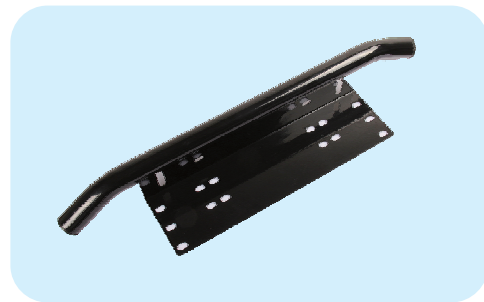
Item No: JCHB100

Size: 39x23x47cm

Weight: 3.2kg

Material: Steel

Color: black



Car Lamp Holder

Specification:

License plate and car lamp holder

Item No: LPST201, LPST301

Size: 60x10.5x5.5cm

Weight: 0.6kg, 1.4kg

Material: Aluminium, Steel

Color: Black

License Plate

Specification:

License plate fixed on 4 roller fairlead

Item No: LPST101

Size: 30x15x6.5cm

Weight: 0.5kg

Material: Aluminium

Color: Black





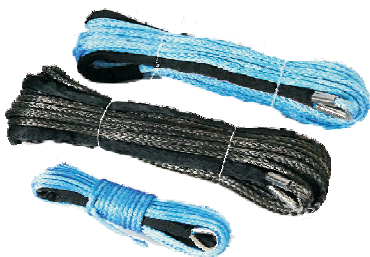
Tree Trunk Protector

Specification:

Item No	W.L.L	Size(LxW)	Material	Color
ST5PL201	5000kg	20Mx50mm	Polyester/Nylon	Customized
ST8PL101	8000kg	9Mx60mm	Polyesterr/Nylon	Customized
ST8PL102	8000kg	9Mx75mm	Polyesterr/Nylon	Customized
ST12PL301	12000kg	3Mx75mm	Polyesterr/Nylon	Customized

Synthetic Rope

Specification:



Item No	Diameter	Breaking Strength (UHMWPE)	Breaking Strength (Dyneema)	Color
SR040	4mm	2250lbs	3750lbs	Customized
SR050	5mm	3750lbs	5500lbs	Customized
SR060	6mm	5250lbs	8100lbs	Customized
SR070	7mm	7500lbs	10700lbs	Customized
SR080	8mm	10114lbs	13500lbs	Customized
SR090	9mm	12361lbs	16400lbs	Customized
SR100	10mm	14204lbs	22100lbs	Customized
SR110	11mm	18080lbs	25350lbs	Customized
SR120	12mm	22026lbs	27800lbs	Customized
SR130	13mm	25622lbs	34600lbs	Customized
SR140	14mm	32090lbs	38800lbs	Customized



Cargo Lashing Belt

Specification:

Item No	W.L.L	Breaking Strength	Belt Width	Weight	Material	Color
CL750SS	750kg	1500kg	25mm	0.39kg	Stainless Steel	Customized
CL1500SS	1500kg	3000kg	35mm	0.60kg	Stainless Steel	Customized
CL2500SS	2500kg	5000kg	50mm	1.10kg	Stainless Steel	Customized
CL4000SS	4000kg	8000kg	75mm	3.10kg	Stainless Steel	Customized

50KN Recovery Ring

Specification :

Item No: RR50AL

W.L.L: 50KN

Size: 100x30mm

Weight: 400g

Material: Aluminum

Color: Customized

Finish: powder-coated/oxidation



200KN Recovery Ring

Specification :

Item No: RR200AL

W.L.L: 200KN

Size: 160x45mm

Weight: 1600g

Material: Aluminum

Color: Customized

Finish: powder-coated/oxidation



Folding Shovel

Specification:

Item No: FS465
 Size: 465mx112mm
 Weight: 0.7kg
 Material: Steel
 Color: Black

Winch Cable Dampener

Specification:

Winch cable dampener
 Item No: WCD100
 Size: 45x45cm
 Weight: 0.9kg
 Material: PVC
 Color: Orange



Gloves

Specification:

Item No: GLV100, GLV200
 Length: 25cm
 Weight: 160g, 210g
 Material: Leather
 Color: Yellow, Blue

Recovery Kits Bag

Specification:

Item No	Includes
KB10PC01 	1 x 8T sanch block 1 x 5T receiver hitch 2 x 3/4" bow shackles 1 x extension strap: 20Mx50MMx5000KG 1 x snatch strap: 9Mx60MMx8000KG 1 x tree trunk protection: 3Mx75MMx12000KG 1 x winch cable dampener 1 x gloves 1 x carry bag
KB10PC02 	1 x 8T sanch block 1 x folding shovel with bag 2 x 3/4" bow shackles 1 x extension strap: 20Mx50MMx5000KG 1 x snatch strap: 9Mx60MMx8000KG 1 x tree trunk protection: 3Mx75MMx12000KG 1 x winch cable dampener 1 x gloves 1 x carry bag

Tow Ball

STANDARD TRAILER BALL



Item No	Ball Size	Shank Length	Lift	Capacity
TB-178-A	1-7/8"	1-3/4"	STANDARD	2000 LBS
TB-178-B	1-7/8"	2"	STANDARD	2000 LBS
TB-178-C	1-7/8"	2-1/8"	STANDARD	2000 LBS
TB-178-D	1-7/8"	2-1/2"	STANDARD	2000 LBS
TB-178-E	1-7/8"	2-1/8"	STANDARD	5000 LBS
TB-200-A	2"	1-3/4"	STANDARD	3500 LBS
TB-200-B	2"	2"	STANDARD	3500 LBS
TB-200-C	2"	2"	STANDARD	6000 LBS
TB-200-D	2"	2-1/8"	STANDARD	6000 LBS
TB-200-E	2"	2-1/2"	STANDARD	6000 LBS
TB-516-A	2-5/16"	2"	STANDARD	6000 LBS
TB-516-B	2-5/16"	2-1/2"	STANDARD	6000 LBS
TB-516-C	2-5/16"	2"	STANDARD	10000 LBS
TB-516-D	2-5/16"	2-1/2"	STANDARD	10000 LBS

SHORT SHANK TRAILER BALL

Item No	Ball Size	Shank Diameter	Shank Length	Lift	Capacity
TB-S178-A	1-7/8"	1	8 MM	STANDARD	-
TB-S200-A	2	1	8 MM	STANDARD	-
TB-S516-A	2-5/16"	1	8 MM	STANDARD	-

LONG SHANK TRAILER BALL

Item No	Ball Size	Shank Diameter	Shank Length	Lift	Capacity
TB-L178-A	1-7/8"	3/4"	2-3/4"	STANDARD	2000 LBS
TB-L178-B	1-7/8"	3/4"	3-3/8"	STANDARD	2000 LBS
TB-L178-C	1-7/8"	1"	2-3/4"	STANDARD	5000 LBS
TB-L178-D	1-7/8"	1"	3-3/8"	STANDARD	5000 LBS
TB-L200-A	2"	3/4"	2-3/4"	STANDARD	3500 LBS
TB-L200-B	2"	3/4"	3-3/8"	STANDARD	3500 LBS
TB-L200-C	2"	1"	2-3/4"	STANDARD	6000 LBS
TB-L200-D	2"	1"	3-3/8"	STANDARD	6000 LBS
TB-L516-A	2-5/16"	1-1/4"	2-3/4"	STANDARD	10000 LBS
TB-L516-B	2-5/16"	1-1/4"	3"	STANDARD	10000 LBS

INTERNAL THREAD TRAILER BALL

Item No	Ball Size	Shank Diameter	Shank Length	Lift	Capacity
TB-IT178-A	1-7/8"	3/4"	-	STANDARD	2000 LBS
TB-IT200-A	2	3/4"	-	STANDARD	3500 LBS

AUSTRALISAN STANDARD TRAILER BALL

Item No	Ball Size	Shank Diameter	Shank Length	Lift	Capacity
TB-500-A	50MM	7/8"	60MM	STANDARD	3.5T



Wheel Spacer

Specification:

Item No	PCD	Bolt Strength	Thread	Material	Fits Car
WS410025	4-100	10.9/12.9	12x1.5/14x2	6061-T6/7075-T6	Fits all PCD:4-100 Toyota, Honda, Mazda, Dodge, Chevy cars
WS511425	5-114.3	10.9/12.9	12x1.5/14x2	6061-T6/7075-T6	Mustang
WS512730	5-127	10.9/12.9	12x1.5/14x2	6061-T6/7075-T6	Wrangler
WS613530	6-135	10.9/12.9	12x1.5/14x2	6061-T6/7075-T6	F150
WS613535	6-135	10.9/12.9	12x1.5/14x2	6061-T6/7075-T6	F150
WS513930	5-139.7	10.9/12.9	12x1.5/14x2	6061-T6/7075-T6	Ram
WS513935	5-139.7	10.9/12.9	12x1.5/14x2	6061-T6/7075-T6	Ram
WS613950	6-139.7	10.9/12.9	12x1.5/14x2	6061-T6/7075-T6	Silverado
WS613975	6-139.7	10.9/12.9	12x1.5/14x2	6061-T6/7075-T6	Silverado
WS515030	5-150	10.9/12.9	12x1.5/14x2	6061-T6/7075-T6	Land Cruiser, Tundra
WS515035	5-150	10.9/12.9	12x1.5/14x2	6061-T6/7075-T6	Land Cruiser, Tundra

Brand



Patents



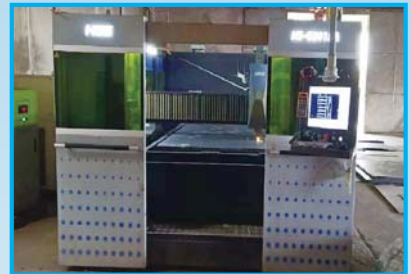
Certificates





宁波萨尔曼国际贸易有限公司
NINGBO SALMAN INTERNATIONAL TRADE CO., LTD.

Factory Scene

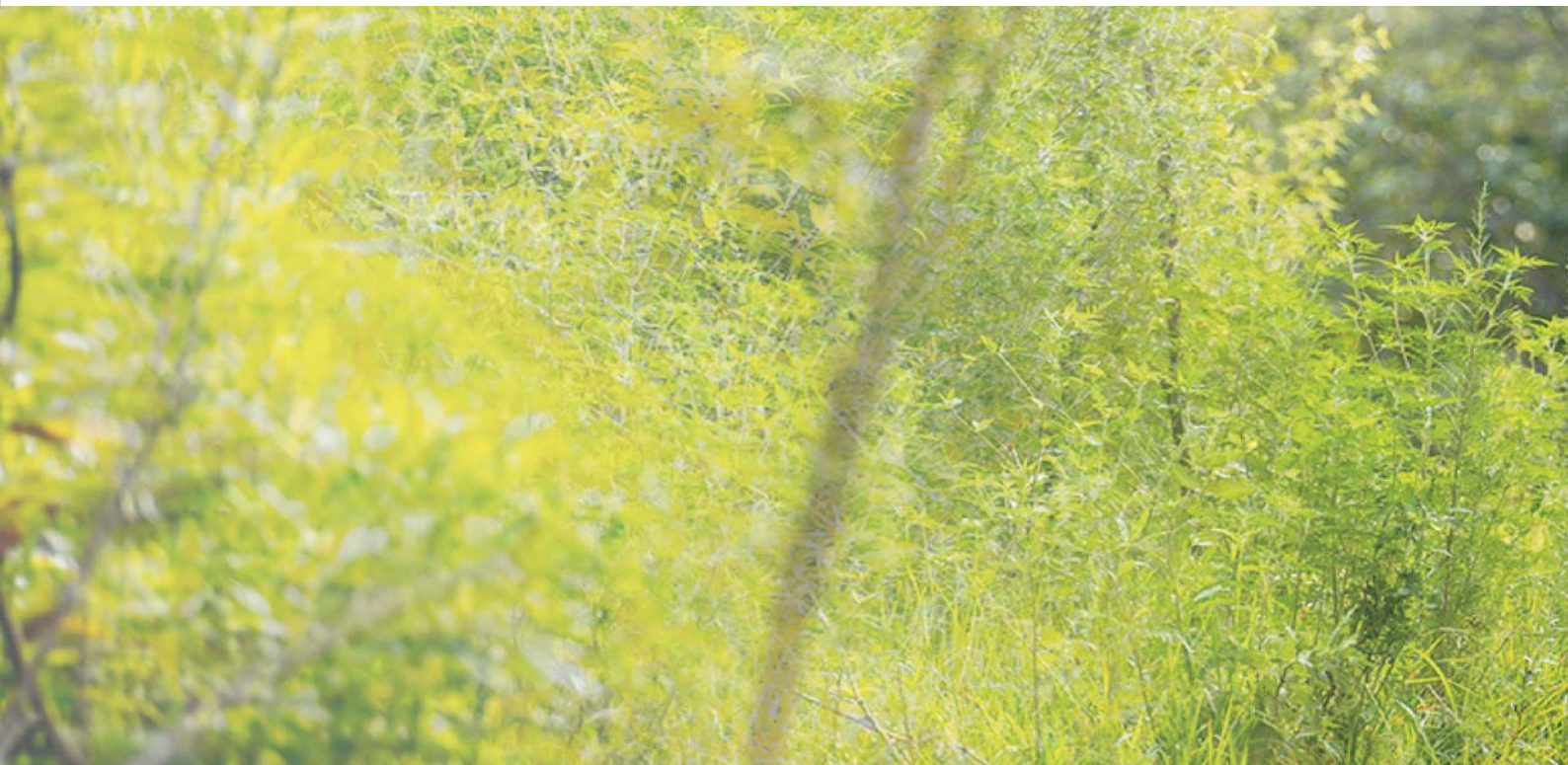


Tel : +86-574-87565010

Fax : +86-574-87565001

Email: info@nbsalman.com

Website: <http://www.nbsalman.com>



办公地址：

中国浙江省宁波市高新区聚贤路555号微软大楼918室

Office Address：

Room 918 Microsoft Building, No.555 Juxian Road,
Ningbo National Hi-Tech Zone, Ningbo City, Zhejiang Province, China

工厂地址：

中国浙江省宁波市鄞州区东吴镇栗树塘工业区

Factory Address：

Lishutang Industrial Park, Dongwu Town, Yinzhou District,
Ningbo City, Zhejiang Province, China